

BELT

Apparecchio da esterni a parete o a terra. Disponibile in 2 dimensioni. Costituito da:

- Corpo in alluminio pressofuso verniciato
- Diffusore in policarbonato
- Parabola riflettente in alluminio
- Guarnizioni in silicone
- Viti di chiusura in acciaio inox
- Verniciatura in polveri poliesteri ad elevata resistenza ai raggi ultravioletti e alla corrosione

Wall or ground outdoor luminaire. It is available in 2 different sizes. Constructed of:

- Painted die-cast aluminium body
- Polycarbonate diffuser
- Aluminium reflector
- Silicon gaskets
- Stainless steel screws
- Painting using high resistance to UV and corrosion polyester powders



Colori - Colours

- X=2 Bianco
White
- X=3 Nero
Black
- X=9 Antracite
Anthracite
- X=4 Silver

Diffusore - Diffuser

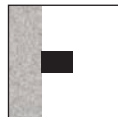
Codice-Code 08 4040

Codice-Code 08 6060

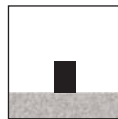
Le lampadine vengono fornite solo su richiesta

Bulbs supplied only on request

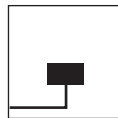
Classe energetica : vedi pag. 370
Energy class : see page 370



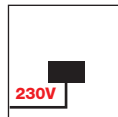
4040 - 6060
Installazione a parete
Wall mounting



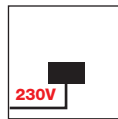
4046
Installazione a terra
Floor mounting



Entrata singola cavi di alimentazione
Single power supply cables input



LED - art. 4040.66/67X - 4046.66/67X
L'apparecchio è fornito completo di alimentatore elettronico Full Range 100/240V 50/60Hz posizionato all'interno dell'apparecchio.
The luminaire is supplied with a Full Range 100/240V 50/60Hz built-in transformer



LED - art. 6060.55/56X
Led a tensione di rete 220/240V 50/60Hz.
Connessione diretta alla rete di alimentazione senza necessità di trasformatore.
LED's direct operation at 220/240V 50/60Hz.
No transformer is required.



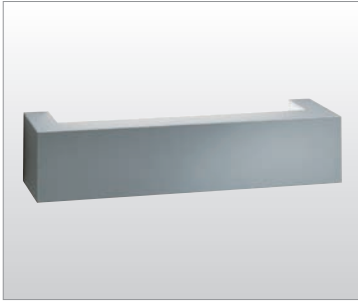
IK 09



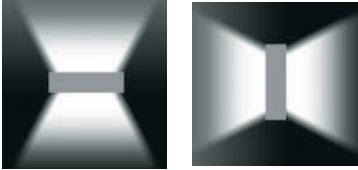
L'apparecchio BELT a parete può essere installato sia orizzontale sia verticale

BELT wall luminaire can be installed both horizontal and vertical





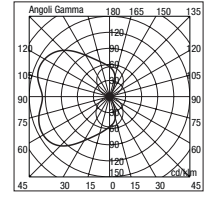
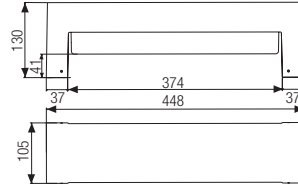
4040



BELT BIG

Installazione a parete
Wall mounting

4040.99X		TC-L	24W	2G11
Con reattore elettronico / With electronic ballast				
● 4040.66X		LED	15W	1275 lm 4000 K
● 4040.67X		LED	15W	1225 lm 3000 K
● Con alimentatore elettronico incorporato / Built-in electronic power supplier				



4040 99



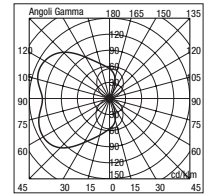
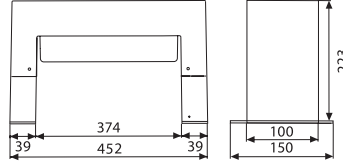
4046



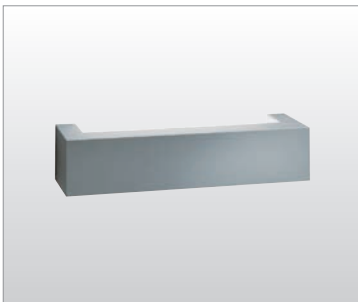
BELT BIG

Installazione a terra
Floor mounting

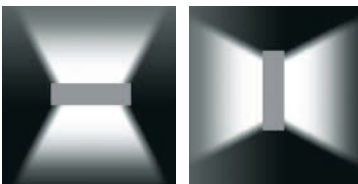
4046.99X		TC-L	24W	2G11
Con reattore elettronico / With electronic ballast				
● 4046.66X		LED	15W	1275 lm 4000 K
● 4046.67X		LED	15W	1225 lm 3000 K
● Con alimentatore elettronico incorporato / Built-in electronic power supplier				



4046 99



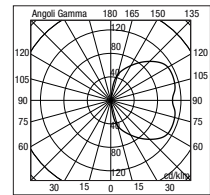
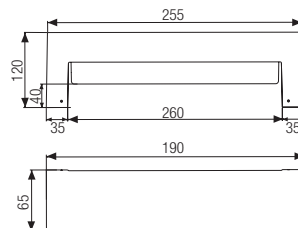
6060



BELT MINI

Installazione a parete
Wall mounting

6060.92X		TC-DE	10W	G24 q-1
Con reattore elettronico / With electronic ballast				
6060.55X		LED	8,7W	800 lm 4000 K
6060.56X		LED	8,7W	780 lm 3000 K



6060.92