

RAY

Apparecchio per illuminazione di esterni costituito da:




- Palo in alluminio estruso verniciato
- Struttura superiore in alluminio pressofuso verniciato
- Diffusore in policarbonato
- Guarnizione in silicone
- Viti di chiusura in acciaio inox
- Verniciatura in polveri poliestere ad elevata resistenza ai raggi ultravioletti e alla corrosione

Outdoor luminaire constructed of:

- Painted extruded aluminium post
- Painted die-cast aluminium head
- Polycarbonate diffuser
- Silicon gasket
- Stainless steel screws
- Painting using high resistance to UV and corrosion polyester powders



Colori - Colours

- X=3  Nero
Black
- X=9  Antracite
Anthracite
- X=4  Silver



2810-2811
Installazione a terra
Floor mounting



2812
Installazione a muro
Wall mounting

Diffusore - Diffuser
Codice-Code 08 2810



Le lampadine vengono fornite solo su richiesta
Bulbs supplied only on request

Classe energetica : vedi pag. 370
Energy class : see page 370

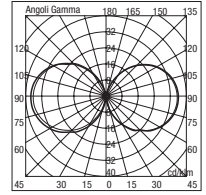
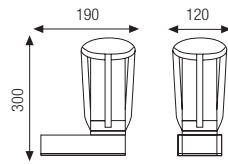




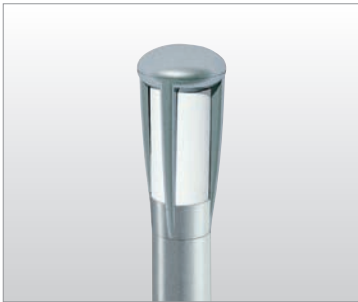
2812

Apparecchio a parete
in alluminio pressofuso
Die-cast aluminium wall luminaire

2812.00X		A60	60W	E27
2812.96X		TC-D	18W	G24 d-2

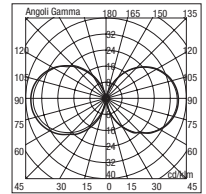
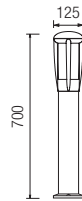


2812 96



2811 H 700

2811.00X		A60	60W	E27
2811.96X		TC-D	18W	G24 d-2

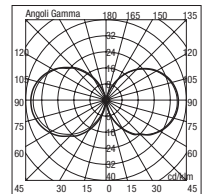
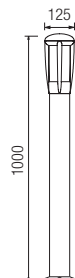


2811 96



2810 H 1000

2810.00X		A60	60W	E27
2810.96X		TC-D	18W	G24 d-2



2810 96