

# STELLA

Apparecchio per interni ed esterni costituito da:

- Corpo in alluminio pressofuso verniciato
- Diffusore in vetro satinato o policarbonato opale
- Parabola riflettente in alluminio
- Guarnizioni in EPDM
- Viti di chiusura in acciaio inox
- Verniciatura in polveri poliesteri ad elevata resistenza ai raggi ultravioletti e alla corrosione

Indoor and outdoor luminaire constructed of:

- Die-cast aluminium body
- Satin glass or opal polycarbonate diffuser
- Aluminium reflector
- EPDM gaskets
- Stainless steel screws
- Painting using high resistance to UV and corrosion polyester powders



Colori - Colours

X=2 Bianco  
White

X=3 Nero  
Black

X=9 Antracite  
Anthracite

X=4 Silver

Diffusore - Diffuser

Codice-Code 00 1000

Vetro/Glass

Codice-Code 08 1000

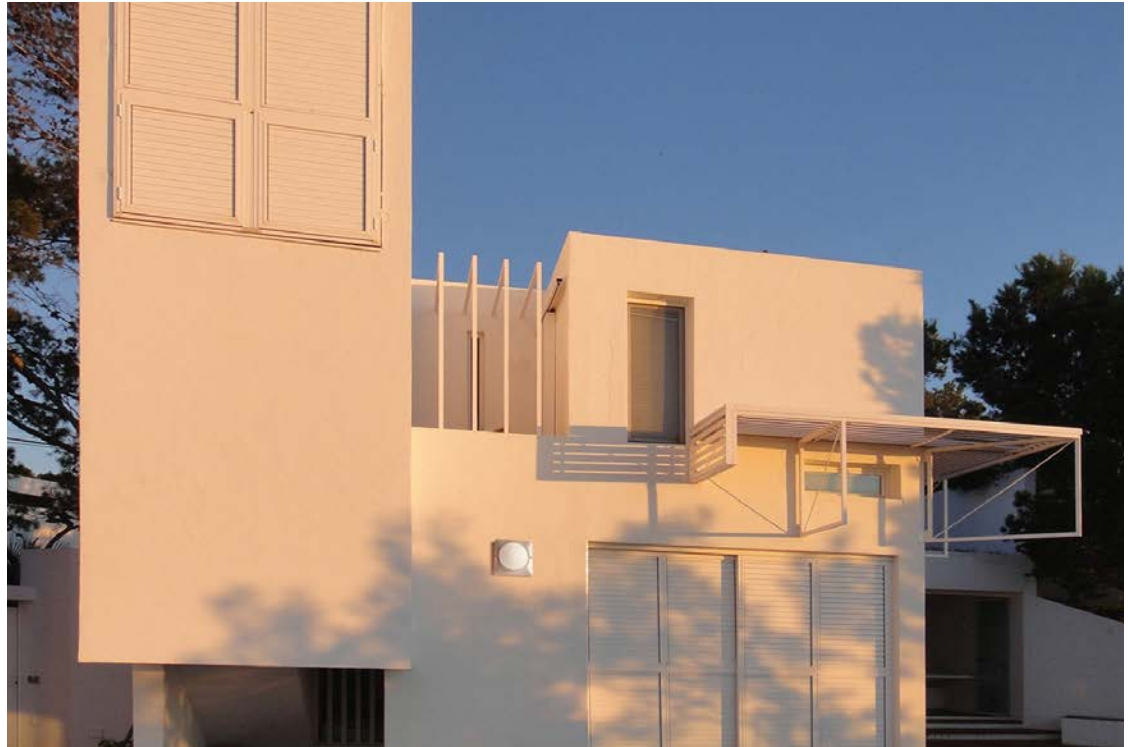
Policarbonato/Polycarbonate

Le lampadine vengono fornite solo su richiesta

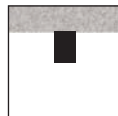
Bulbs supplied only on request

Classe energetica : vedi pag. 370

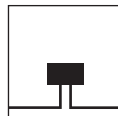
Energy class : see page 370



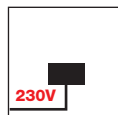
Installazione a parete  
Wall mounting



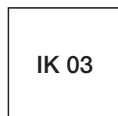
Installazione a soffitto  
Ceiling mounting



Doppia entrata  
cavi di alimentazione  
Double power supply  
cables input



LED  
L'apparecchio è fornito completo di alimentatore elettronico Full Range 100/240V 50/60Hz posizionato all'interno dell'apparecchio.  
The luminaire is supplied with a Full Range 100/240V 50/60Hz built-in transformer



Diffusore vetro  
Glass diffuser



Diffusore policarbonato  
Polycarbonate diffuser

- Gli apparecchi della serie Stella sono forniti con diffusore in vetro. Su richiesta sono disponibili anche con diffusore in policarbonato.

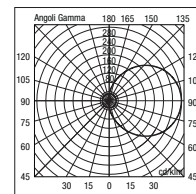
Stella series luminaires are supplied with a glass diffuser. Available also with polycarbonate diffuser on request.



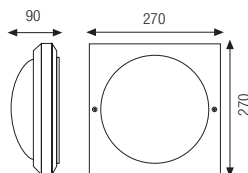
3040

<b>3040.00X</b>		A60	75W	E27
<b>3040.96X</b>		TC-D	18W	G24 d-2
<b>3040.95X</b>		TC-D	26W	G24 d-3
<b>3040.66X</b>		LED	9W	900 lm 4000 K

Con alimentatore elettronico incorporato / Built-in electronic power supplier



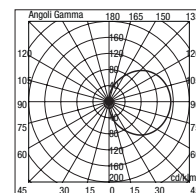
3040 66



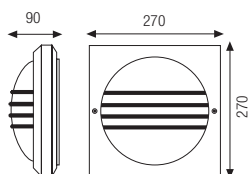
3041

<b>3041.00X</b>		A60	75W	E27
<b>3041.96X</b>		TC-D	18W	G24 d-2
<b>3041.95X</b>		TC-D	26W	G24 d-3
<b>3041.66X</b>		LED	9W	900 lm 4000 K

Con alimentatore elettronico incorporato / Built-in electronic power supplier



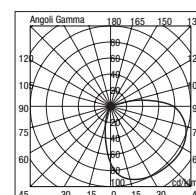
3041 00



3042

<b>3042.00X</b>		A60	75W	E27
<b>3042.96X</b>		TC-D	18W	G24 d-2
<b>3042.95X</b>		TC-D	26W	G24 d-3
<b>3042.66X</b>		LED	9W	900 lm 4000 K

Con alimentatore elettronico incorporato / Built-in electronic power supplier



3042 00

