

SHOW

Proiettore per interni ed esterni a parete, a soffitto o a terra costituito da:

- Struttura in alluminio pressofuso verniciato
- Diffusore in vetro temperato
- Guarnizioni in silicone
- Viti di chiusura in acciaio Inox
- Picchetto in plastica
- Verniciatura in polveri poliestere ad elevata resistenza ai raggi ultravioletti e alla corrosione

Indoor and outdoor wall, ceiling or ground spotlight constructed of:

- Die-cast painted aluminium body
- Tempered glass diffuser
- Silicon gaskets
- Stainless steel screws
- Plastic spike
- Painting using high resistance to UV and corrosion polyester powders



Colori - Colours

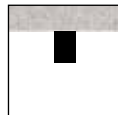
X=31  Antracite metallico
Anthracite metallic

Diffusore - Diffuser
Codice-Code 00 4050

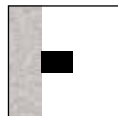
Le lampadine vengono fornite solo su richiesta ad eccezione della versione GU10 LED

Bulbs supplied only on request except for GU10 LED version

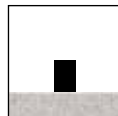
Classe energetica : vedi pag. 356
Energy class : see page 356



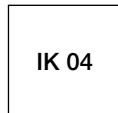
Cod. 4050
Installazione a soffitto
Ceiling mounting



Cod. 4050
Installazione a parete
Wall mounting



Cod. 4060
Installazione a terra
Floor mounting



IK 04

Cod. 4060
Apparecchio provvisto di 3 m di cavo H05RN-F con spina 2P+T IP44

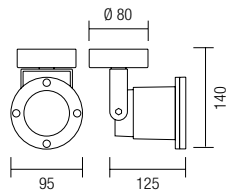
Cod. 4060
Luminaire provided with 3 m of flexible cable H05RN-F and plug 2P+T IP44

Installazione a parete
Wall mounting

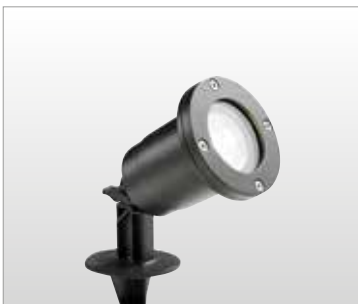


4050 ○ anello / ring

4050.15X		Q PAR16	50W	GU10	
● 4050.05X		LED GU10	6W	450 lm	4000 K
● 4050.06X		LED GU10	6W	440 lm	3000 K

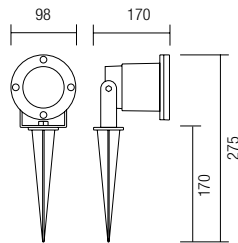


Installazione a terra con picchetto
Ground fixing with spike



4060 ○ anello / ring

4060.15X		Q PAR16	50W	GU10	
● 4060.05X		LED GU10	6W	450 lm	4000 K
● 4060.06X		LED GU10	6W	440 lm	3000 K



- Lampadina LED inclusa - 50x56 mm
LED bulb included - 50x56 mm

